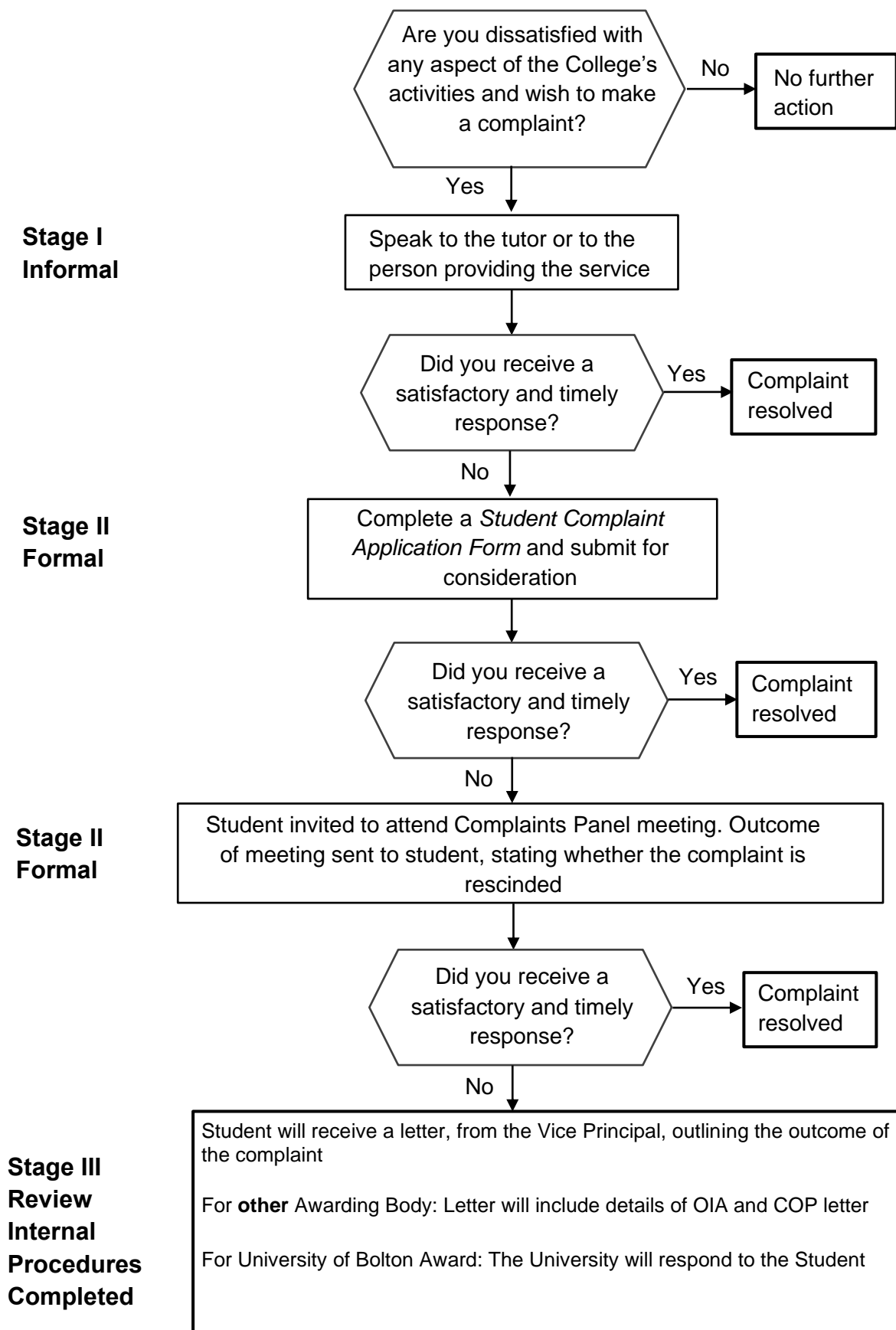


Student Complaints Procedure Summary Flowchart



Data Protection Policy:

<http://www.boltoncollege.ac.uk/assets/Uploads/Attachments/GDPR/Bolton-College-Data-Full-Protection-Policy.pdf>

Extract from Data Protection Policy:

How We Use Your Personal Information - The College may share details relating to attendance, progress, conduct etc with parents/carers of all learners aged under 19 or aged 19-24 with an EHCP at the start of their programme for the whole duration of their programme. Learners who wish to object to this once they turn 18 must refer to the student handbook for details of how to do this. The College may also share basic information with connexions and related local authority support services and previous schools for the purpose of references and tracking learner destinations.

Bolton College will use the information you provide along with that obtained from other sources including references, support needs, previous education etc to manage your education and training, produce reports and references and to inform you about opportunities for progression and skills.

We may also create access to external facilities on your behalf which may assist you in your studies. For more information on how we use your information please refer to our Privacy Notice:
<https://www.boltoncollege.ac.uk/assets/Uploads/Attachments/GDPR/Bolton-College-Student-Privacy-Notice.pdf>

As an organisation partially funded by Government education funding bodies we are required under contractual funding arrangements and financial memorandums to share information with partner organisations.